

FEATURES

- Made in the Netherlands from raw material to endproduct
- Low glare solution (<UGR 19)

SPRINGS

Standard with Wire spring (gyproc/metal).
Also available as above with Concrete spring (concrete/gyproc).

COLOURS

Available colours:

Matt white RAL 9016 (XX=MW)
Matt black RAL 9005 (XX=BL)

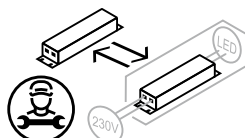
Altra 68 LVC

Fixed

SPECIFICATIONS

Beam angle	40°/80°
Fixture material	Die cast aluminium
CCT	2700K / 3000K / 4000K
CRI	93
IK rate	IK02
IP rate	IP20
Operating temperature	-20°C / +45°C
Safety marks	EN60598 / EN62031 / EN62471
Colour consistency	MacAdam step 3
Warranty	5 years
Safety class	III
Energy class	These products contains a light source of energy efficiency class F (2700K/3000K) / E (4000K)

This luminaire contains built-in LED lamps. There are no exchangeable parts inside the luminaire. EU 874/2012



IP20

ALTRA 68 LVC



LV CABLE (for customer PSU, not recommended)

Description	Item code
LV Cable 0,15m AMP	6K5203BL1B02

No warranty when used with own PSU.

500 mA

ITEM SPECIFICATIONS

Description	Item code WS	CS	Input	Vf	W	Lm	Lm/W	CRI (typ.)	UGR	Pf	Ripple	Inrush current	B-16A Fuse
Altra 68 LVC max 600Lm 2700K CRI93 40°	LE3R03XX9RE2	LE3R03XX5YE2	max 500mA	11.4	5,7	600	105	93	15.2	x	x	x	x
Altra 68 LVC max 625Lm 3000K CRI93 40°	LE3S03XX9RE2	LE3S03XX5YE2	max 500mA	11.4	5,7	625	110	93	15.2	x	x	x	x
Altra 68 LVC max 650Lm 4000K CRI93 40°	LE3T03XX9RE2	LE3T03XX5YE2	max 500mA	11.4	5,7	650	114	93	15.2	x	x	x	x
Altra 68 LVC max 600Lm 2700K CRI93 80°	LE3R03XX9ME2	LE3R03XX4ME2	max 500mA	11.4	5,7	600	105	93	21.6	x	x	x	x
Altra 68 LVC max 625Lm 3000K CRI93 80°	LE3S03XX9ME2	LE3S03XX4ME2	max 500mA	11.4	5,7	625	110	93	21.6	x	x	x	x
Altra 68 LVC max 650Lm 4000K CRI93 80°	LE3T03XX9ME2	LE3T03XX4ME2	max 500mA	11.4	5,7	650	114	93	21.6	x	x	x	x

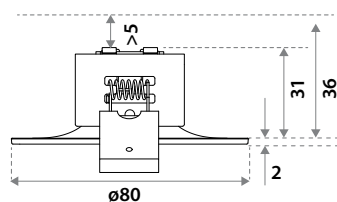
Description	Safety class	Energy class	Weight	Dimensions carton	Quantity per carton	Expected Lifetime			Reported Lifetime*		
						L70B10	L80B10	L90B10	L70B10	L80B10	L90B10
Altra 68 LVC max 600Lm 2700K CRI93	III	F	56 gr	105x105x61 mm	42 pcs	177.000 hrs	113.000 hrs	51.000 hrs	>102.000 hrs	>102.000 hrs	51.000 hrs
Altra 68 LVC max 625Lm 3000K CRI93	III	F	56 gr	105x105x61 mm	42 pcs	177.000 hrs	113.000 hrs	51.000 hrs	>102.000 hrs	>102.000 hrs	51.000 hrs
Altra 68 LVC max 650Lm 4000K CRI93	III	E	56 gr	105x105x61 mm	42 pcs	177.000 hrs	113.000 hrs	51.000 hrs	>102.000 hrs	>102.000 hrs	51.000 hrs

All values are measured at 230V (+/- 7%). *Based on 17.000hrs of LM80 testing at 700mA and a Tc85 °C.

CHOOSE YOUR LV LUMEN OUTPUT

	mA	1 spot		4 spots		Lumen Output			Lumen / Watt			Driver types			
		Vf	W	Vf	W	2700K	3000K	4000K	2700K	3000K	4000K	KGP No dim	KGP Dali	TCI Triac	TCI Casambi
Special request	350	11,1	3,9	44,4	15,6	430	450	470	108	113	118	CC36W150-900	CC36W150-900	122260	127648
Standard	500	11,4	5,7	45,6	22,8	600	625	650	105	110	114	CC36W150-900	CC36W150-900	122260	127648

DIMENSIONS



The lifetime expectation is measured in a recess ceiling with normal air ventilation (Ta 25°C). When build directly in the concrete material it is possible to keep the standard expected lifetime. If the airflow is less then 5mm (for instance build in a very small plastic box or covered with insulation material) it is advisable to set the input current of the driver to 350mA to keep the same lifetime.

CUT SIZE



Using CS springs: Ø 68-75 mm.
Thickness ceiling 5-31 mm &
recess depth 31 mm.

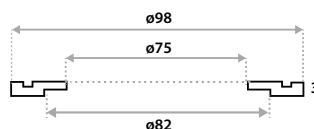


Using WS springs. Ø 68-75 mm.
Thickness ceiling 1-20 mm &
recess depth 31 mm.

CORRECTION RING Ø98MM

This correction ring is used in (retrofit) installations with existing cut-outs measuring 68 - 88 mm. Only in combination with WS wire spring.

Item code	00C803MW0000
Colour	Matt White RAL 9016
Type of material	Aluminium



PSU (INCL. LVC CABLE SET 4L)



PSU KGP 36W No dim NFC*
163x30x21 mm
Exp. lifespan 100.000 hrs



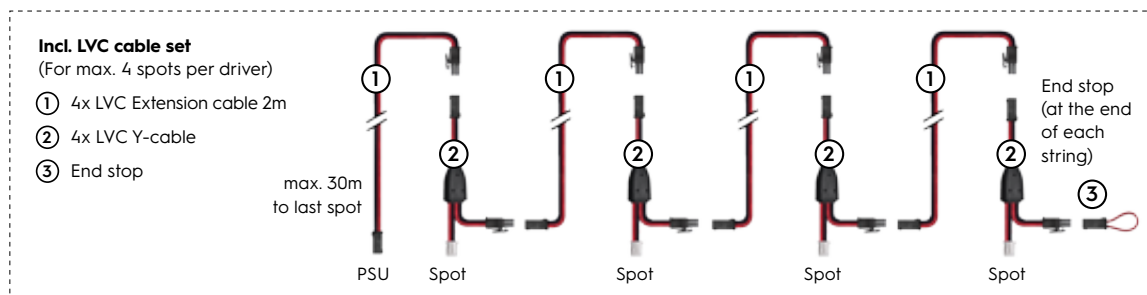
PSU KGP 36W Dali NFC*
163x30x21 mm
Exp. lifespan 100.000 hrs



PSU TCI 32W Triac Dipswitch
166x46x34 mm
Exp. lifespan 100.000 hrs



PSU TCI 38W Casambi NFC*
108x44x30 mm
Exp. lifespan 100.000 hrs



Item specifications (PSU)

Driver types	Supplier name	Item code	Input	Watt	Max mA	Max Vf	Pf	Eff.	Inrush current	B-16A Fuse
PSU 36W 500mA No-dim KGP + LVC cable set 4L	CC36W150-900	05PM03MLMJ04	220-240V AC/DC	36W	150-900	50	>0.95	88%	8,5A 16μS	59 pcs
PSU 36W 500mA Dali® KGP + LVC cable set 4L	CC36W150-900	05PP03MLMJ04	220-240V AC/DC	36W	150-900	50	>0.95	88%	8,5A 16μS	59 pcs
PSU 32W 500mA Triac TCI + LVC cable set 4L	122260	05GG03MLMJ04	220-240V AC/DC	32W	350-700	47	0.97	85%	5A 50μS	50 pcs
PSU 38W 500mA Casambi TCI + LVC cable set 4L	142047	05ZE03MLMJ04	220-240V AC/DC	38W	150-1050	54	0.95	>89%	5A 50μS	50 pcs

All values are measured at 230V (+/- 7%). *Dali is not suitable for the HV Distributor system.

*NFC INSTRUCTION VIDEO



KGP CLO in development
TCI NFC & CLO in development

LV CABLE (for customer PSU, not recommended)

Description	Item code
LV Cable 0,15m AMP	6K5203BL1802

No warranty when used with own PSU.

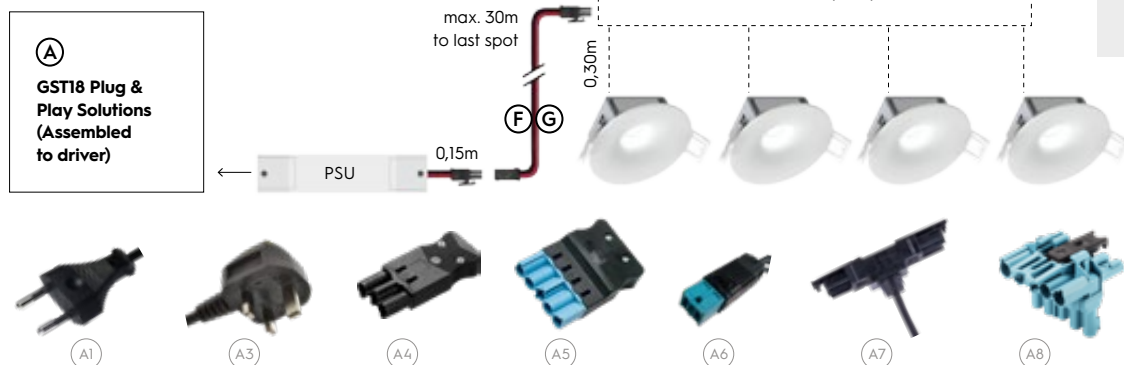
INSTALLATION PSU



Remote

It is recommended to install the power supplies in an easily accessible place. By using the LV extension cable, the distance to the last spot can be increased to a maximum of 30 metres.

PLUG & PLAY CABLE SYSTEM 3/5P



FEATURES

- Professional 16A Plug & Play system
- 3 or 5 wire system
- Widely spread in lighting market

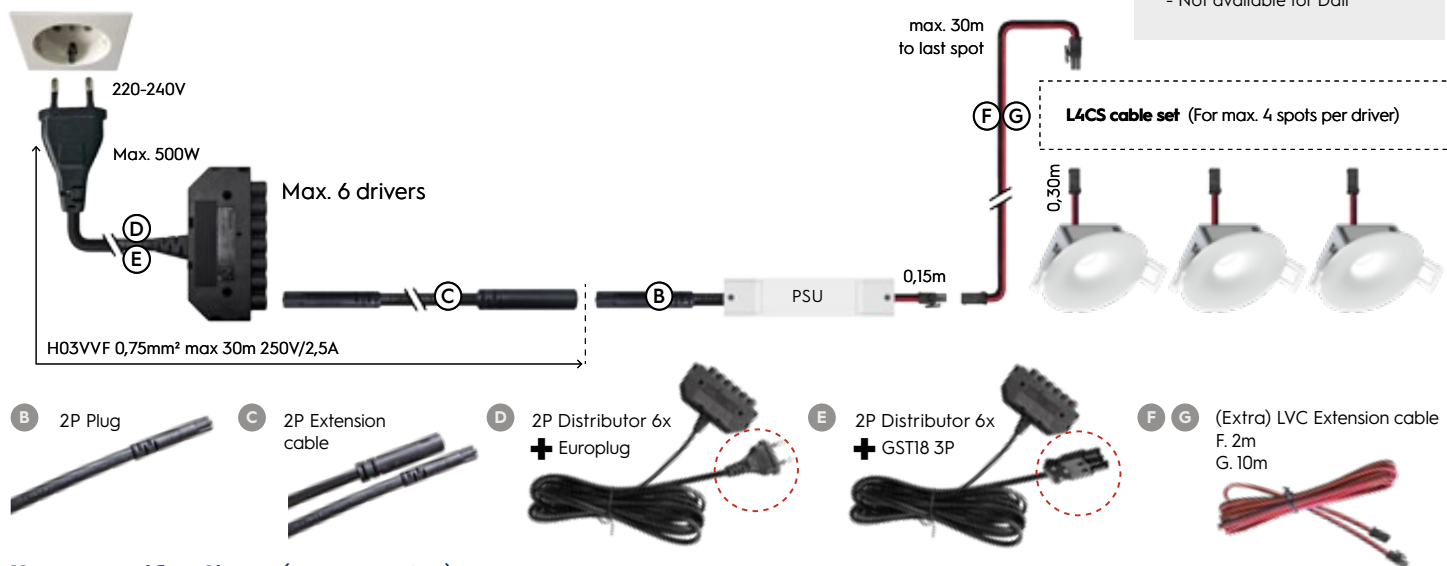
Item specifications (accessories)

Description	Class	Length	Item code
(A1) Euro plug incl. cable	II	2.0 m	015203BL1200
(A3) UK plug incl. cable	II	2.0 m	0A5203BL1200
(A4) 3P GST18 male incl. cable 2x0,75mm ²	II	0.3 m	455203BL0000
(A4) 3P GST18 male incl. cable 2x0,75mm ²	II	3.0 m	455203BL1500
(A5) 5P GST18 male 1-10V/Dali incl. cable 4x0,75mm ²	II	0,3 m	655203BL0000
(A5) 5P GST18 male 1-10V/Dali incl. cable 4x0,75mm ²	II	3,0 m	655203BL1500

Description	Class	Length	Item code
(A6) BST14i male Dali incl. cable	III	0.5 m	095203BL0000
(A6) BST14i male Dali incl. cable	III	3.0 m	095203BL1500
(A7) 3P GST18 T-splitter male incl. cable	II	0.2 m	459203BL0000
(A8) 5P GST18 T-splitter male 1-10V/Dali	I / II	x	659203BU0000
(A9) BST14i T-splitter male 1-10V/Dali incl. cable	III	0,2 m	099203BL0000

DISTRIBUTOR SYSTEM 2P*

*Not for Dali.



FEATURES

- Basic 2,5A Plug & Play system
- 2 wire system
- Not available for Dali

Item specifications (accessories)

Description	Specification	Class	Length	Item code
(B) 2P Plug 0,15m *	HV 0,15m male (0,75mm ²)	II	0,15 m	615203BL1B02
(C) 2P Extension cable	HV Ø7,6mm 2m m/f (0,75mm ²)	II	2.0 m	6F5203BL1202
(D) 2P Distributor 6x + Europlug	HV Ø7,6mm 6x + cable 3m 2,5A	II	3,0 m	665203BL2502
(E) 2P Distributor 6x + GST18 3P	HV Ø7,6mm 6x + cable 3m 2,5A	II	3,0 m	665203BL1502
(F) LVC Extension cable 2m	LV 2m m/f (0,34mm ²)	II	2,0 m	6B5203BL1202
(G) LVC Extension cable 10m	LV 10m m/f (0,34mm ²)	II	10,0 m	6E5203BL1202

*Assembled to driver, not for Dali drivers.